

Welcome to 5P

Meet The Teacher 2021



5P Team



Miss Peckham



Mrs Mazis

Year 5 Team



Miss Peckham (5P)



Ms Wilson (5PW)



Mrs Parker (5PW)

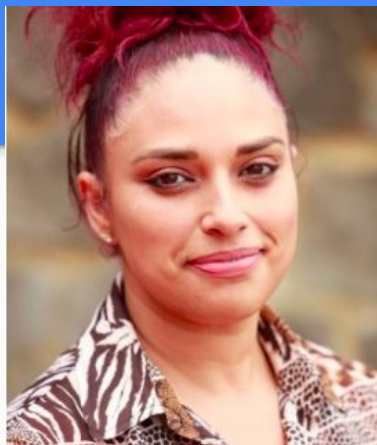


Mrs Greeley (5G)



Miss Glenn YGL

Year 5 Team



Miss Vincenti (5S)



Mrs Barrett (5PW)



Mrs Medway (5G)



Mrs Mazis (5P)



Miss Peddel (5S)



Mrs Johnson (5S)

Wider Team



Mrs Fewster
Music Teacher



Ms Apicella
Music Teacher



Mrs Robel
Librarian



Ms Nicolas
Swimming Teacher



Ms Rodhain
French Teacher



Ms Scantlebury
Administrator



Mrs Nash
Learning Mentor



Mrs De Sordi
Welfare Officer

Leadership Team



Ms Wynne
Executive
Headteacher



Mrs Mitchell
Head of School



Mrs Hoyle
Assistant
Headteacher



Mr Craig
Lead Practitioner



Miss Dhillon
Inclusion Manager

The Moss Hall Way



Aims, values and strategic priorities

Aim Values Priorities	Learning together, making a difference					
	Be kind <i>Courage, empathy</i>		Work hard <i>Ambition, responsibility</i>		Make a difference <i>Compassion, integrity</i>	
	An Ambitious Curriculum	Research driven Pedagogy	Professional learning & leadership development	Raising standards for all	Communication that supports everyone	Every child seen, known, safe.

Our Values and Rules



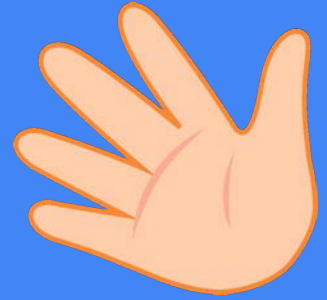
Values

- Be kind
- Work hard
- Make a difference

Rules

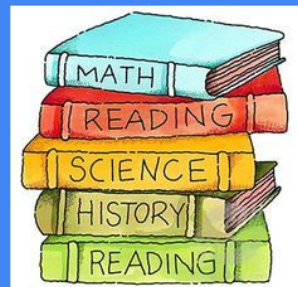
- Ready
- Respectful
- Responsible

Five Trusted Adults



- We encourage all children to identify 5 adults in school who they feel comfortable and safe to go to with a problem.

Moss Hall Curriculum



Be Kind, Work Hard and Make a Difference

Our curriculum is **knowledge-rich**.

Our curriculum has **social justice** and **community** at its heart.

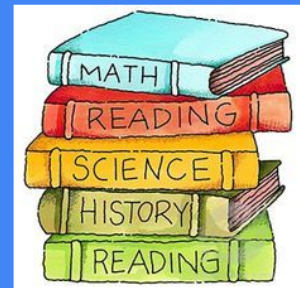
Our children have the space to **think critically** and form an opinion.

Our children are **confident** and **articulate** and leave us ready to become valued members of society.

Our **reading-centred** curriculum exposes our children to **diverse** and **relevant books** and authors.

<https://www.mosshall.school/learning/curriculum-vision/>

Year 5 Curriculum



Term	Lenses	Big Questions
Autumn	<ul style="list-style-type: none">• Civilisation• Empire & Invasion	<ul style="list-style-type: none">• What was the greatest achievement of the Early Islamic Civilisation?• Vikings: ruthless killers or peaceful settlers?
Spring	<ul style="list-style-type: none">• Sustainability• Power & Monarchy	<ul style="list-style-type: none">• Should we mine Antarctica for natural resources?• Which monarch experienced the greatest shift in power during their reign?
Summer	<ul style="list-style-type: none">• Settlement• Trade & Resources	<ul style="list-style-type: none">• Should we continue to live near rivers?• Who benefits from trade?

5P Timetable

5P: Miss Peckham & Mrs Mazis (Weeks 1,3,5,7: 30th Aug, 13th Sept, 27th Sept, 11th Oct)

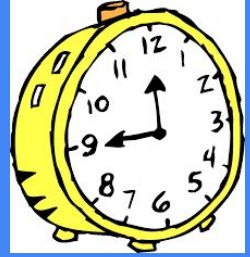
	8.55		BREAK		LUNCH	
Monday		9.00 – 9.20 Assembly	9.30 – 10.30 English	10.30	10.45 – 11.45 Maths	11.45 – 12.45 12.45 – 1.15 Reading 1.15 – 2.15 ART 2.15 – 3.20 Computing
Tuesday PE Kit		9.00 – 9.30 PSHE	9.30 -11.00 English	11.00	11.15 – 12.15 Maths 12.15 – 12.45 RE	12.45 – 1.45 1.45 – 2.15 RE 2.15 – 3.20 PE Outdoor
Wednesday	Registration	9.00 – 9.30 PSHE	9.30 – 11.00 English & Reading	11.00	11.15 - 12.15 Maths 12.15 – 12.45 History/ Geography	1.45 – 3.20 History/ Geography
Thursday Swimming Kit		9.00 – 9.30 Singing	9.30 – 10.30 Swimming & Library Ms Nicolas & Mrs Robel	10.30	10.45 – 11.45 Music Ms Apicella	11.45 – 12.45 12.45 – 2.15 English & Reading 2.15 – 3.20 Maths
Friday		9.00 – 9.20 Assembly	9.30 – 11.00 English & Reading	11.00	11.15 – 12.15 Maths 12.15 – 12.45 Science	1.45 – 3.20 Science

5P Timetable

5P: Miss Peckham & Mrs Mazis (Weeks 2,4,6,8: 6th Sept, 20th Sept, 4th Oct, 18th Oct)

	8.55			BREAK			LUNCH		
Monday	Re gis tra tio n	9.00 – 9.20 Assembly	9.30 – 10.30 English	10.30	10.45 – 11.45 Maths		11.45 – 12.45	12.45 – 1.15 Reading	1.15 – 3.20 History/Geography
Tuesday PE Kit		9.00 – 9.30 PSHE	9.30 -11.00 English	11.00	11.15 – 12.15 PE Indoor	12.15 – 12.45 Maths	12.45 – 1.45	1.45 – 2.15 Maths	2.15 – 3.20 Computing
Wednesday		9.00 – 9.30 PSHE	9.30 – 11.00 English & Reading	11.00	11.15 - 12.15 Maths	12.15 – 12.45 Science	12.45 – 1.45	1.45 – 2.15 Science	2.15 – 3.20 Art
Thursday		9.00 – 9.30 Singing	9.30 – 10.30 French Ms Rodhain	10.30	10.45 – 11.45 Music Ms Apicella		11.45 – 12.45	12.45 – 2.15 English & Reading	2.15 – 3.20 Maths
Friday PE Kit		9.00 – 9.20 Assembly	9.30 – 11.00 English & Reading	11.00	11.15 – 12.15 Maths	12.15 – 12.45 RE	12.45 – 1.45	1.45 – 2.15 RE	2.15 – 3.20 PE Outdoor

School Times



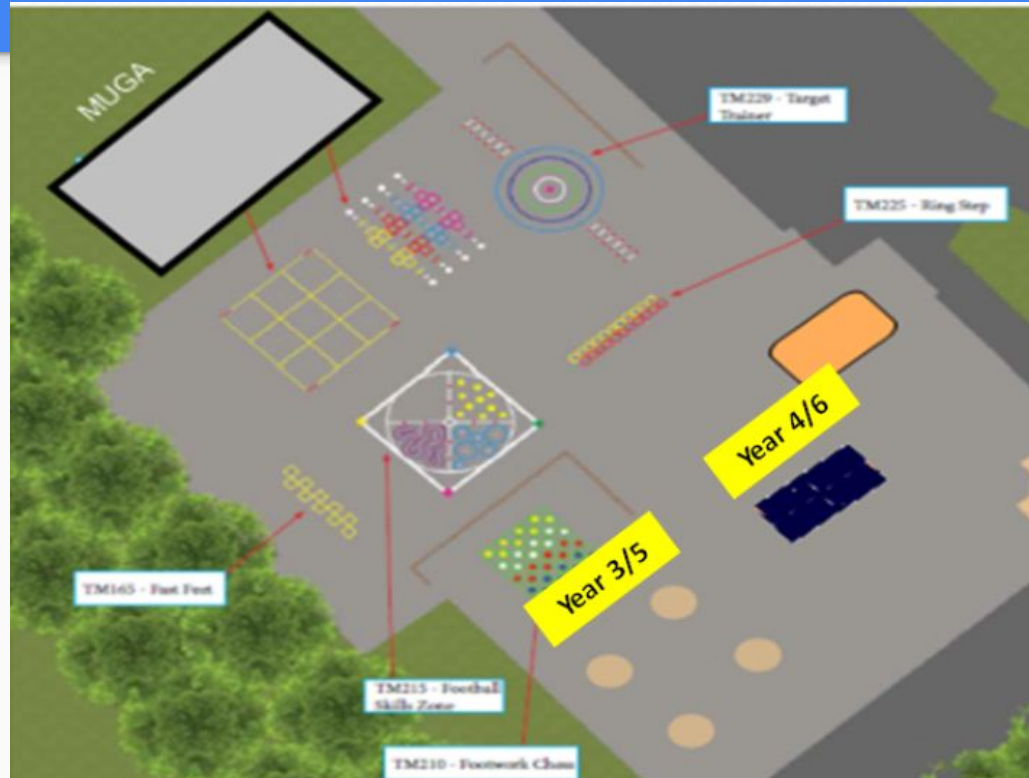
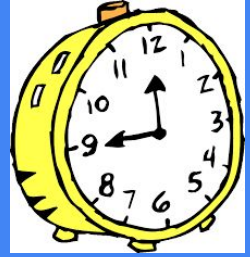
- School opens at **8:40am** for children to begin early work.
- The bell is rung at **8:50am** with children needing to be in class before **9:00am**.
- After 9:00am, children are recorded as late.
- The school day ends at **3:20pm**.

End of the Day



- The children are taken to the playground and can be collected from there. Children will only be dismissed when teachers see the child's parents/carers.
- If your child meets you at Moss Hall Grove, you need to inform school. Children will then be escorted to Moss Hall Grove to meet you there.
- Children attending playcentre will be met in the playground by a member of their staff.
- Children attending a club will meet their leader at the club location.
- **Lone travellers** - parents/carers must read the policy, complete a form and meet with Mrs Nash or Miss Dhillon to have their request approved.

End of the Day



Absences



- Please use the tab on the website or email school before **8:30am** to report child absence.
- You must state what is wrong as we have a duty of care to you, other children, staff and the whole school community.
- Appointments should be made out of school time. If this is not possible, please let the office know in advance. Children must be collected and dropped off by an adult to be signed in/out.
- If you need to request a period of absence, write a letter of request addressed to **Mrs Mitchell**.

Uniform



- **All belongings must be labelled.**
- Hair to be tied back once it reaches shoulder length.
- Jewellery - only watches and small studs if necessary.
- No nail polish.
- Swimming kit. Please bring it on the day only:
 - Girls - full costume
 - Boys - swimming trunks



Uniform



From September 22-23 we will ask that **all** children wear a MHSF federation logo sweatshirt and wear a MHSF logo polo shirt.

21-22 Moss Hall Junior School

Junior Uniform:

- logoed blue sweatshirt (old or new logo)
- polo shirt (old (blue/ white) or new white logo or plain white)
- dark grey/ black school trousers, school shorts or school skirt
- white, grey or black plain socks or tights
- black low heeled plain school shoes/ entirely black trainers. no colourful trainers or any with markings, branding.

Summer uniform includes:

- Blue gingham dress. White socks

Junior PE kit:

- Plain white t shirt or old MHJ PE shirt (not the same shirt as worn during the day)
- plain black shorts, skorts, leggings or jogging trousers
- trainers

What to bring to school



- School bag
- Packed lunch (if having)
- Water bottle
- Accelerated Reader book every day
- Morning snacks:
 - Fresh fruit or vegetable which they may eat at break time.
 - **We are a nut free school.**
- Swimming kit and library books when necessary (free library bag, 50p for a new one)

School Dinners



- We use a cashless system so please pay online using your Ping account.
- Lunches must be paid in advance - £2.20 per meal.
- Children must choose packed lunch or school dinner for the half term.
- School dinner menus can be found on the school website

<https://www.mosshall.school/parents/school-meal-menu/>

Home Learning



This is based on our current home learning policy :

- Reading practice - daily (Accelerated Reader)
- Arithmetic/times tables practice - daily (TT Rockstars)
- Spelling - daily
- Knowledge organiser revision to support learning in the classroom

Accelerated Reader



- Assists children in choosing books and reading texts that are suitable for them and that will develop their reading fluency and key reading skills.
- Each child should be reading daily at home
- They should bring their book in daily for school reading
- Once your child has completed a book, they need to complete the quiz linked to the book online, as soon as possible.
- Children will be able to change their books during their library sessions

Clubs

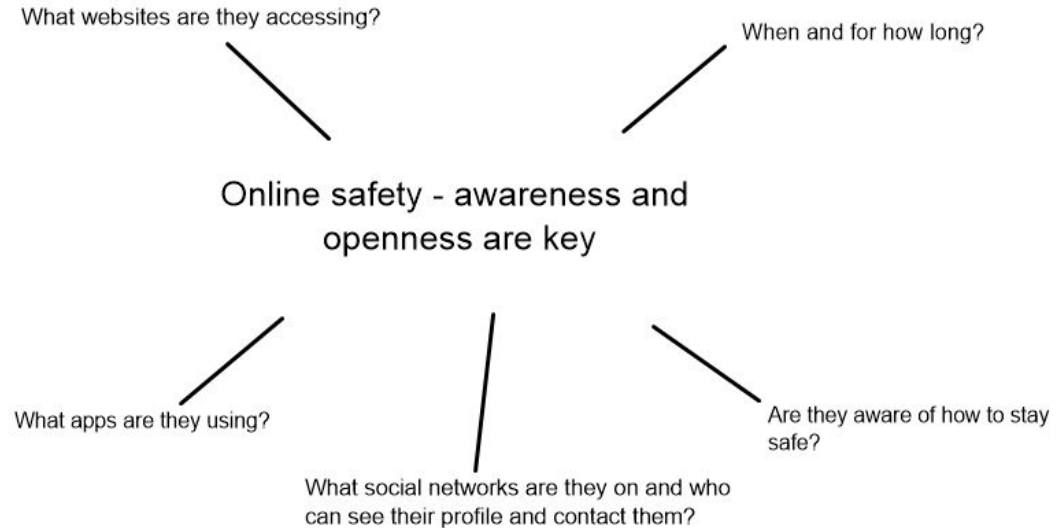


- External (paid) clubs for the Autumn Term are currently full.
- New applications will be available in December for the Spring Term.
- Ms Scantlebury manages the register lists, so please address all applications to her.
- Internal clubs run by school staff will be advertised internally.
- Music lessons are provided by BEAT. We organise timetables, however any other problems must be taken up with them.

Online Safety

Useful links:

- NSPCC Social network guide
<https://www.net-aware.org.uk/>
- Think You Know - videos
<https://www.thinkuknow.co.uk/>
- Childnet advice and support
<https://www.childnet.com/>
- Child Exploitation and Online Protection Reporting Service
<https://www.ceop.police.uk/Safety-Cen>



Keeping in Touch



- Weekly newsletter
- Curriculum overviews and knowledge organisers
- Letters (via ping)
- [Twitter - @MossHallSchools https://twitter.com/mosshallschools?lang=en](https://twitter.com/mosshallschools?lang=en)
- Staff on the playground before and after school
- Please keep us up to date with any problems or changes
 - Your class teacher is the first point of contact for queries and concerns.
 - Call or email the school office for any queries or to organise a meeting.
 - The leadership team are always available for meetings as well.

Key Dates



- Flu Vaccinations - Wednesday 29th September
 - INSET day - Friday 22nd October
 - Half Term - 25th - 29th October
 - Online Learning Review Day (closed to children) - Friday 19th November
-
- Y5 School Journey - May 2022

Questions?

