

Moss Hall Junior School



Update: Autumn 2020

Review: Autumn 2022

Cycle: Two yearly

By: Executive Headteacher

Drug, Alcohol and Tobacco Policy

Contents

Introduction	2
Aims	2
Smoking Statement.....	2
Contents & Organisation of Drug Education.....	2
Managing Drug Related Incidents Procedure	2
Monitoring and evaluation	3

Introduction

Moss Hall Junior School recognises the harm that all drugs can have, be they illegal (cocaine, cannabis, heroin etc) legal (alcohol, cigarettes and solvents) or medicines. We aim, through this policy, and it's guidelines to provide clear and consistent procedures, which promote safety and good management.

Aims

Moss Hall Junior School aim to:

- help young people resist drug misuse in order to achieve their full potential in society
- promote and safeguard health and safety of pupils and staff within the school
- To provide a hierarchy of sanctions, for different levels of severity for different drug related incidents
- To endorse a range of learning and supportive responses for those involved in an incident
- To encourage an environment where a supportive response to incidents is not undermined by an unduly punitive response
- To ensure this policy is fully implemented and disseminated to ensure understanding and adopting for all of those connected with the school; pupils, parents, teachers, governors and auxiliary staff.

Smoking Statement

We are a smoke free school and staff, parents, pupils and visitors are not allowed to smoke anywhere on school premises or in sight of the school. Smoke free signage is prominent around our school grounds.

Although e-cigarettes are not covered by smoking legislation, we are not allowing the use of e-cigarettes by pupils, staff, parents, contractors or visitors on the school premises and strongly discourage parents using them when collecting their children from school.

Contents & Organisation of Drug Education

The school aims to provide a programme of drug education in line with the PSHE education scheme of work and the statutory Science Curriculum.

Managing Drug Related Incidents Procedure

The needs and circumstances of the pupils are paramount.

We will consider each situation individually and recognise that a variety of actions in response may be necessary to drug related incidents as recommended by: DfE and ACPO drug advice for schools: <https://www.gov.uk/government/publications/drugs-advice-for-schools>

If the situation leads to a medical emergency the school emergency aid procedures will be followed immediately.

In the absence of a medical emergency, the Executive Head teacher / HoS will be informed and an appropriate response considered. We will refer to the *DfE and ACPO drug advice for schools* on responding to drug related incidents and in determining the response the implications of any action we take will be carefully considered. The focus of any response will be the student not the substance

and we will seek to balance the interests of the individual, other members of the school community and the wider community.

Unless there are exceptional circumstances we will inform parents /carers at the earliest opportunity so that we can work together to support the pupil and to resolve difficulties.

We have a range of professional colleagues who can give or obtain advice and support in drug or alcohol related situations. These include the school's Education Welfare Officer, the local Police Liaison Officer, members of the local Youth Offending Team (whose roles include supporting young people at risk of offending) our local Drug and Alcohol agencies and counselling services. These colleagues can help with a needs assessment and support us in developing an appropriate response. The pupil/s will always be told when information is being passed on, in accordance with the school's policy on confidentiality and GDPR.

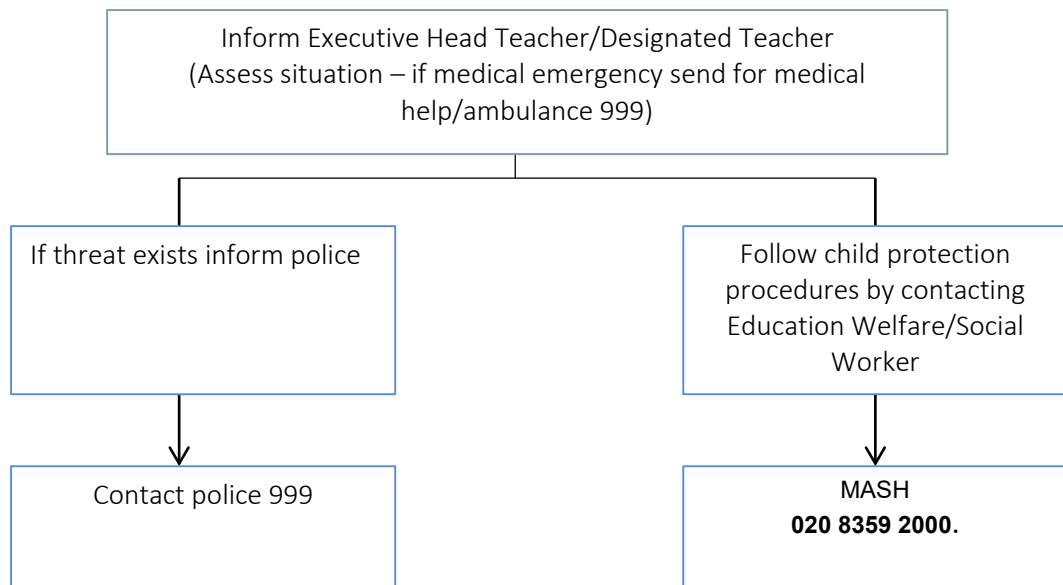
Should a substance suspected of being illicit be found on the school premises it will be handed to the Executive Headteacher and, in the presence of another member of staff placed in a sealed container and locked away until it can be delivered to or collected by a police officer. S/he will also be involved in advising the school on the most appropriate response to the situation. All staff will be made aware of the legal constraints on gathering evidence and questioning those involved.

Monitoring and evaluation

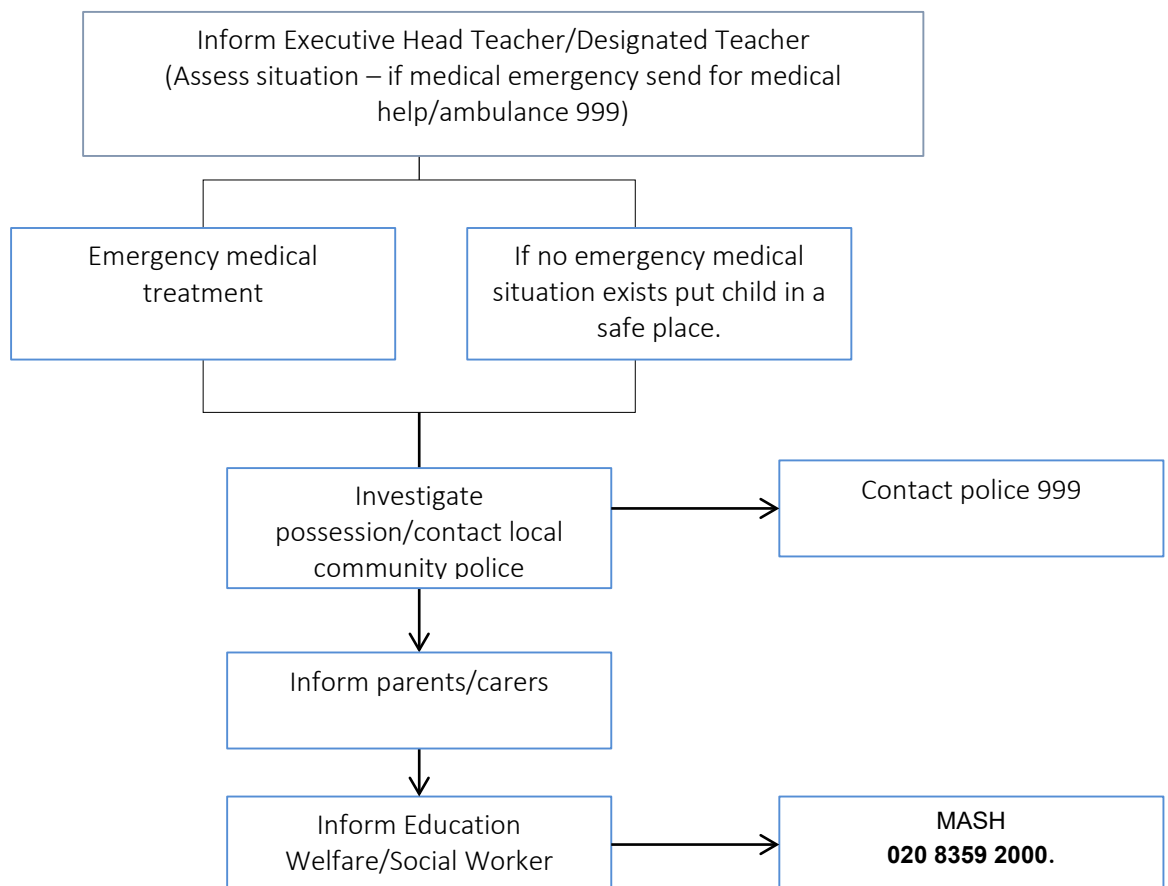
The day to day monitoring of this policy is the responsibility of the Executive Headteacher and the Head of School.

The Executive Headteacher or Head of School will report any incidents to the Welfare Committee.

Parents/Carers/Others under the influence of drugs /alcohol on school premises.

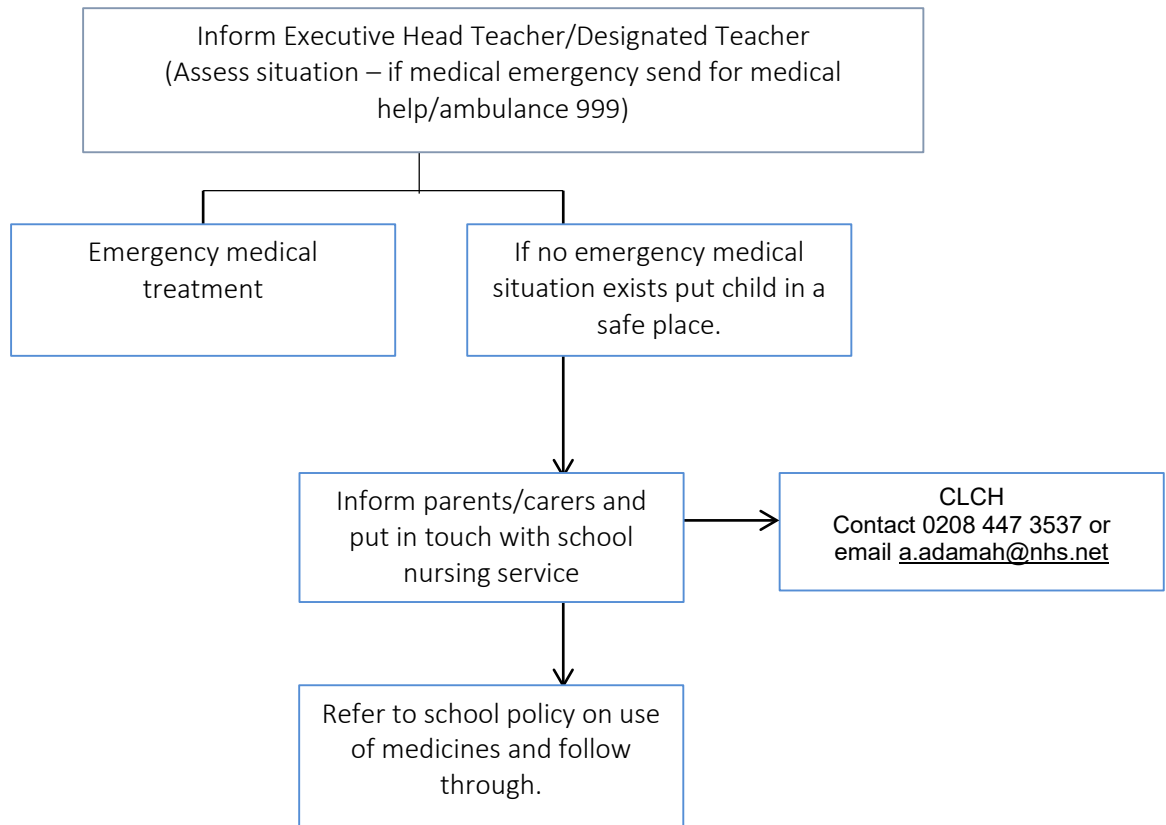


Pupil(s) under the influence of drugs /alcohol on school premises.

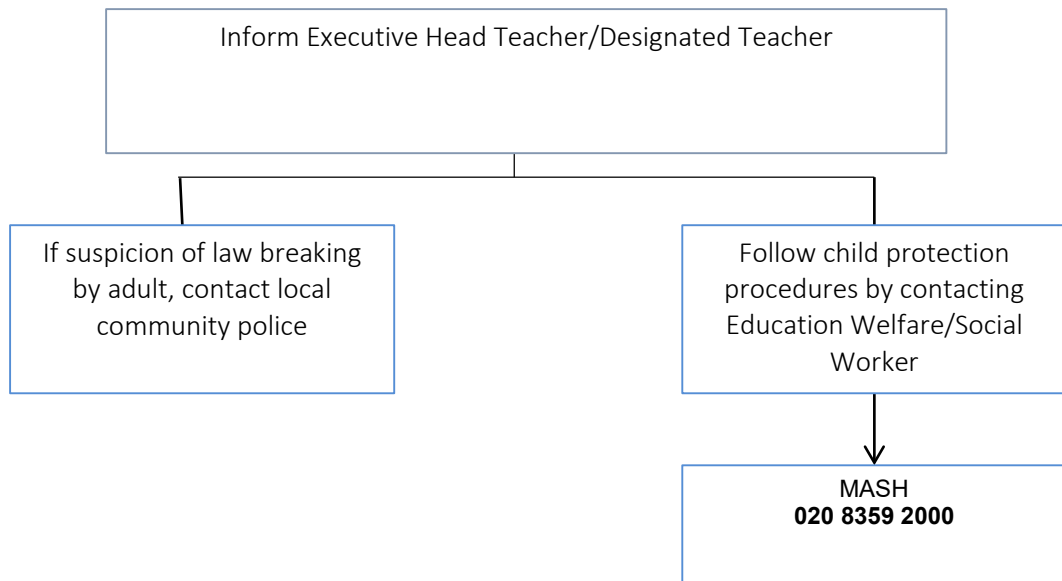


N.B. If tobacco is the drug used you may wish to follow school behaviour/discipline policy

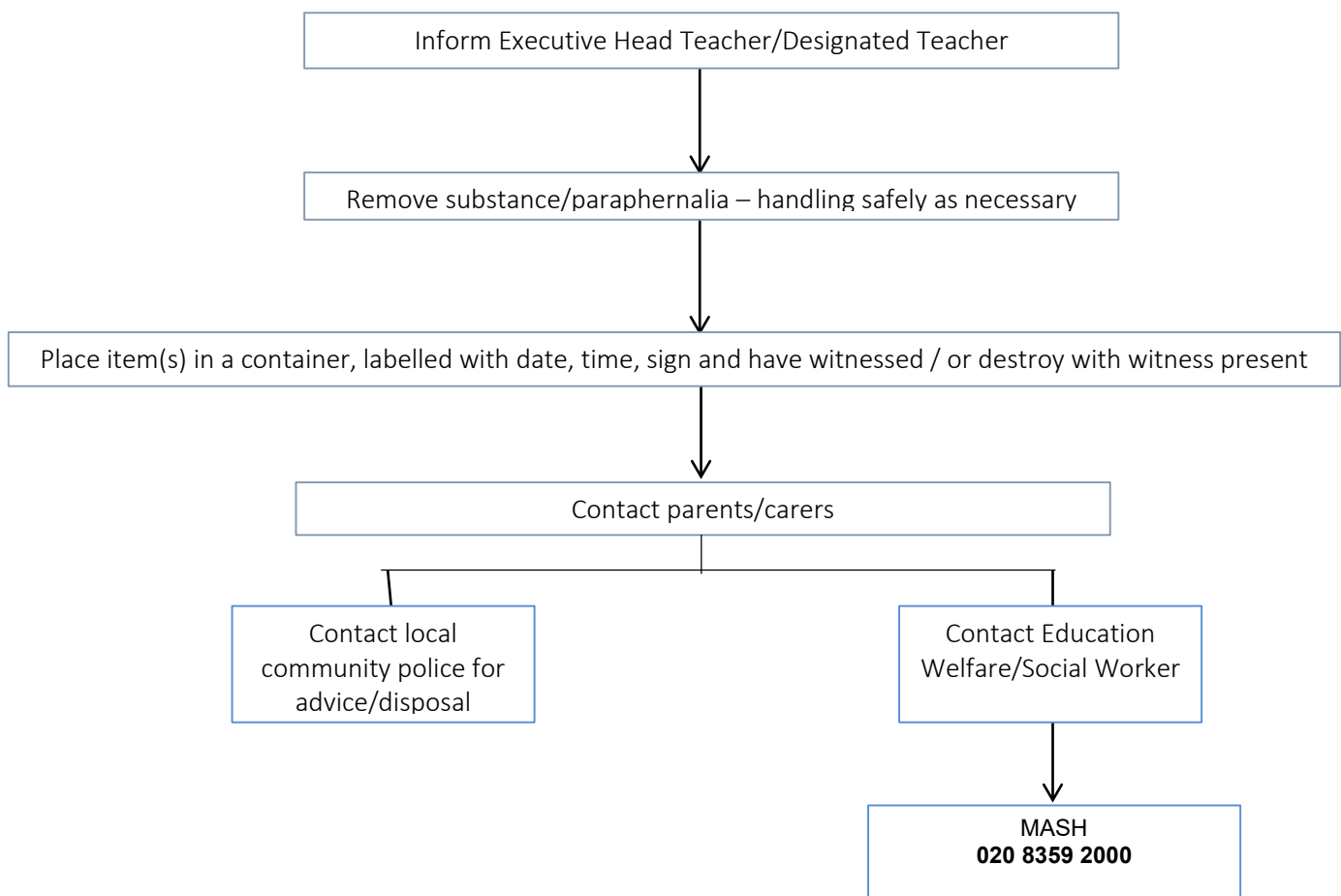
Pupils using medicines inappropriately on school premises.



Pupils makes disclosure about their own or parents/carers/others use of drugs/alcohol



Drugs and / or paraphernalia found on pupils and/or premises



Supplying (drugs/alcohol/tobacco) by pupils/parents/carers/others

