

Welcome to Year 6

Meet The Teacher 2022



Year 6 Team



Mr Peterson
6P/ Year Group Leader



Miss Walker-Nolan
6W



Miss Patel
6V



Mr Games
6G



Ms Warner
6V & 6G



Miss Dap
6V & 6G



Mrs Barrett
6W



Mr Kleinfield
6P



Ms Dipti
6P

Wider Team



Mrs Fewster
Music Teacher



Ms Apicella
Music Teacher



Mrs Robel
Librarian



Ms Rogers
Swimming Teacher



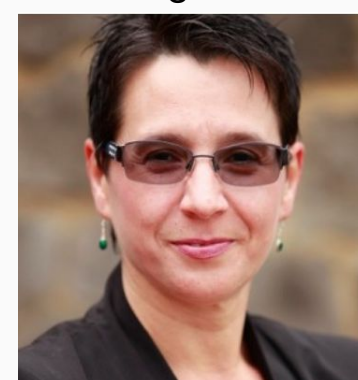
Ms Rodhain
French Teacher



Ms Scantlebury
Administrator



Mrs Nash
Learning Mentor



Mrs De Sordi
Welfare Officer

Leadership Team



Ms Wynne
Executive
Headteacher



Mrs Mitchell
Head of School



Mrs Hoyle
Assistant
Headteacher



Mr Craig
Lead Practitioner



Miss Dhillon
Inclusion Manager

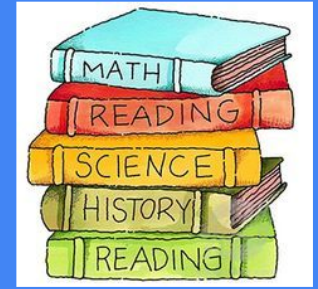
The Moss Hall Way



Aims, values and strategic priorities

Aim	Learning together, making a difference					
Values	Be kind <i>Courage, empathy</i>		Work hard <i>Ambition, responsibility</i>		Make a difference <i>Compassion, integrity</i>	
Priorities	An Ambitious Curriculum	Research driven Pedagogy	Professional learning & leadership development	Raising standards for all	Communication that supports everyone	Every child seen, known, safe.

Moss Hall Curriculum



Be Kind, Work Hard and Make a Difference

Our curriculum is **knowledge-rich**.

Our curriculum has **social justice** and **community** at its heart.

Our children have the space to **think critically** and form an opinion.

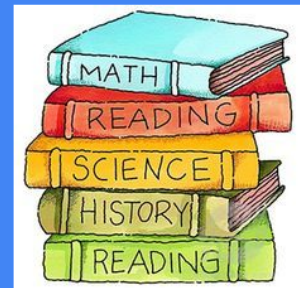
Our children are **confident** and **articulate** and leave us ready to become valued members of society.

Our **reading-centred** curriculum exposes our children to **diverse** and **relevant books** and authors.

<https://www.mosshall.school/learning/curriculum-vision/>

<https://www.mosshall.school/learning/curriculum/>

Year 6 Curriculum



Term	Lenses	Big Questions
Autumn	<ul style="list-style-type: none">● Migration & Diversity● Climate & Biomes	<ul style="list-style-type: none">● what were the push and pull factors of immigration into the UK? What was the experience like for these immigrants? (Jewish (1930's) and Caribbean (1948-1970) waves of immigration)● Why do animals evolve differently?
Spring	<ul style="list-style-type: none">● Society● Rights	<ul style="list-style-type: none">● Was there ever a British revolution?● Have women's lives improved over time?
Summer	<ul style="list-style-type: none">● Democracy● Landscape	<ul style="list-style-type: none">● Can one person make a difference?● How has the UK landscape shaped our society

Lens: MIGRATION & DIVERSITY

What were the push and pull factors of immigration into the UK? What was the experience like for these immigrants? (Jewish (1930's) and Caribbean (1948-1970) waves of immigration)

DR/Reading - No Ballet Shoes in Syria

Writing - The Arrival

Additional Reading - *The Boy at the Back of Class *Talking Turkeys (Refugee - poem) Ben Zephaniah, The Other Side of Truth Beverley Naidoo

History - UK Immigration (Jewish & Windrush waves)

Science - Living Things & Their Habitats

Exploring what ways are living things the same and in what ways are they different?

Art - Collage/Printing: Activism & Street Art

RE - Hinduism - What is the best way for a Hindu to show commitment to God.

PSHCE - How can we keep healthy as we grow?

Music - Lyrics and Origin of The Blues

Computing - Intro to Python

French - A l'Ecole

Outdoor PE - American Football

Indoor PE - Dodgeball/Swimming

School Trips **History:** Migration Museum **RE:** Hindu mandir



Year 6
Curriculum

msshall.school/learning/ages/year-6/

6V Timetable



6V: Miss Veesha Patel TA: Miss Abigail Dap am, Miss Kerry Warner pm (Wks 1,3,5)

	8.55		BREAK			LUNCH			
Monday		9.00 – 9.20 Assembly	9.30 – 10.30 English	10.30	10.45 – 11.30 Maths	11.30 – 12.15 Reading	12.15 – 1.15	1.15 – 2.15 ART/DT	2.15 – 3.20 RE (NR)
Tuesday		9.00 – 9.20 Singing	9.30 – 10.30 Maths	10.30	10.45 – 11.30 English	11.30 – 12.15 Reading	12.15 – 1.15	1.15 – 2.15 Music (LA)	2.15 – 3.20 Swimming & Library (KW)
Wednesday	Re gis tra tio n	9.00 – 9.30 Spellings Homework	9.30 – 10.30 English	10.30	10.45 – 11.30 Maths	11.30 – 12.15 Reading	12.15 – 1.15	1.15 – 2.45 Science	2.45 – 3.20 PSHCE
Thursday		9.00 – 9.30 Times tables	9.30 – 10.30 English	10.30	10.45 – 11.30 Maths (with KJ)	11.30 – 12.15 Reading	12.15 – 1.15	1.15 – 2.45 History/Geography	2.45 – 3.20 PSHCE
Friday		9.00 – 9.20 Assembly	9.30 – 10.30 Maths	10.30	10.45 – 11.30 English	11.30 – 12.15 Reading	12.15 – 1.15	1.15 – 2.15 PE Outdoor	2.15 – 3.20 Computing

<https://www.mosshall.school/parents/class-timetables/>

6V Timetable



6V: Miss Veesha Patel TA: Miss Abigail Dap am, Miss Kerry Warner pm (Wks 2,4,6)

	8.50		BREAK			LUNCH			
Monday		9.00 – 9.20 Assembly	9.30 – 10.30 English	10.30	10.45 – 11.30 Maths LB	11.30 – 12.15 Reading	12.15 – 1.15	1.15 – 2.15 PE Indoor	2.15 – 3.20 RE (NR)
Tuesday		9.00 – 9.20 Singing	9.30 – 10.30 Maths	10.30	10.45 – 11.30 English	11.30 – 12.15 Reading	12.15 – 1.15	1.15 – 2.15 Music (LA)	2.15 – 3.20 French (NR)
Wednesday	Re gis tra tion	9.00 – 9.30 PSHCE	9.30 – 10.30 English	10.30	10.45 – 11.30 Maths	11.30 – 12.15 Reading	12.15 – 1.15	1.15 – 2.45 Science	2.45 – 3.20 ART/DT
Thursday		9.00 – 9.30 PSHCE	9.30 – 10.30 English	10.30	10.45 – 11.30 Maths (with KJ)	11.30 – 12.15 Reading	12.15 – 1.15	1.15 – 2.45 History/Geography	2.45 – 3.20 ART/DT
Friday		9.00 – 9.20 Assembly	9.30 – 10.30 Maths	10.30	10.45 – 11.30 English	11.30 – 12.15 Reading	12.15 – 1.15	1.15 – 2.15 Computing	2.15 – 3.20 PE Outdoor

<https://www.mosshall.school/parents/class-timetables/>



School Times

- School opens at **8:40am** for children to begin early morning learning.
- The bell is rung at **8:50am** with children needing to **be in class before 9:00am.**

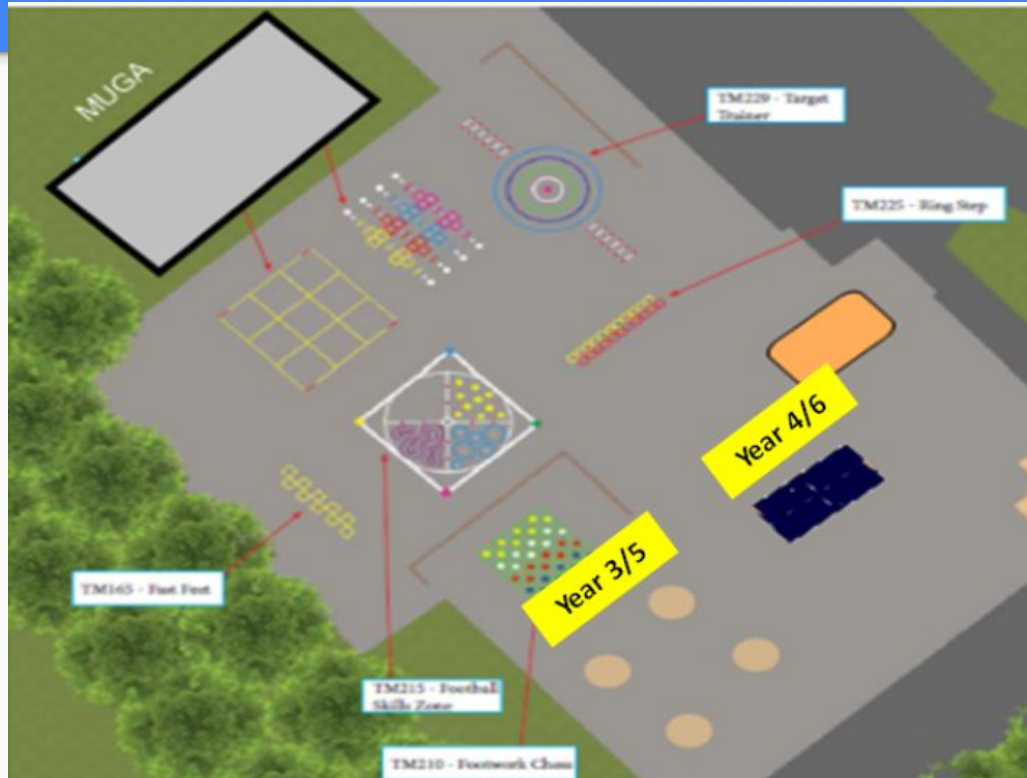
- **After 9:00am**, children are recorded as late.
- The school day ends at **3:20pm.**



End of the Day

- The children are taken to the playground and can be collected from there. Children will only be dismissed when teachers see the child's parents/carers.
- If your child meets you at Moss Hall Grove, you need to inform school. Children will then be escorted to Moss Hall Grove (infant shuttle) to meet you there.
- Children attending playcentre will be met in the playground by a member of their staff.
- Children attending a club will meet their leader at the club location.
- If you wish your child to be an independent traveller, please complete a form from the office and the school will discuss this with you.

End of the Day





Absences

- Please call or email school before **8:30am** to report child absence.
- You must state what is wrong as we have a duty of care to you, other children, staff and the whole school community.
- Appointments should be made out of school time. If this is not possible, please let the office know in advance. Children must be collected and dropped off by an adult to be signed in/out.
- If you need to request a period of absence, write a letter/email of request addressed to **Mrs Mitchell, Head of School.**



Uniform

- Logoed blue sweatshirt
- Polo shirt
- Dark grey/black school trousers, school shorts or school skirt
- White, grey or black plain socks or tights
- Black low-heeled plain school shoes/entirely black trainers
- Summer - Blue gingham dress & white socks
- PE kit (wear on the day):
 - Plain white t-shirt
 - Plain black shorts, skorts, leggings or jogging trousers
 - trainers

Uniform



- Swimming kit (please bring on the day only):
 - Girls - full costume & swimming cap
 - Boys - swimming trunks & swimming cap
- Hair is to be tied back once it reaches shoulder length
- Jewellery - only watches and small studs if necessary
- No nail polish

- **All belongings must be labelled!**



What to bring to school



- School bag
- Packed lunch (if having)
- Water bottle
- Accelerated Reader book **every day**
- Morning snacks:
 - Fresh fruit or vegetable which they may eat at break time.
 - **We are a nut free school.**
- Swimming kit and library books when necessary (free library bag, 50p for a new one)



School Lunches

- The Pantry are our school lunch provider
- You must set up a Pantry account where you can pre order your child's meal (before 9am on the day) and pay for it online
- If your child is absent from school, you need to cancel the meal before 9am to avoid being charged.
- Lunches cost £2.20 per meal.
- Should you have any issues with The Pantry, please contact them on 0208 813 7040



Behaviour

- Children are expected to be **ready, respectful and responsible**.
- We record behaviour on Track It using 4 colours: green, orange, yellow and red
- House points are tracked as green
- Pupils receive certificates when they have gained a certain amount of house points
- House winners are rewarded termly





Home Learning

This is based on our current home learning policy :

- Reading practice - daily (Accelerated Reader)
- Mental arithmetic practice - daily in home learning books
- Spelling - daily in home learning books
- Century tech
- Knowledge organiser revision to support learning in the classroom
- Sometimes a project will be sent home

Monitored daily

<https://www.mosshall.school/learning/home-learning/>

Accelerated Reader



- Assists children in choosing books and reading texts that are suitable for them and that will develop their reading fluency and key reading skills.
- Each child should be reading daily at home
- They should bring their book in daily for school reading
- Once your child has completed a book, they need to complete the quiz linked to the book online, as soon as possible.
- Children will be able to change their books during their library sessions

Clubs



- External (paid) clubs for the autumn term are currently full
- New applications will be available in December for the spring term.
- Ms Scantlebury manages the clubs but you can find information and apply via the school website
- Internal clubs run by school staff will be advertised internally
- Music lessons are provided by BEAT. We organise timetables, however any other problems must be taken up with them - <https://beatrust.org.uk/contact/>



Five Trusted Adults

- We encourage all children to identify 5 adults in school who they feel comfortable and safe to go to with a problem

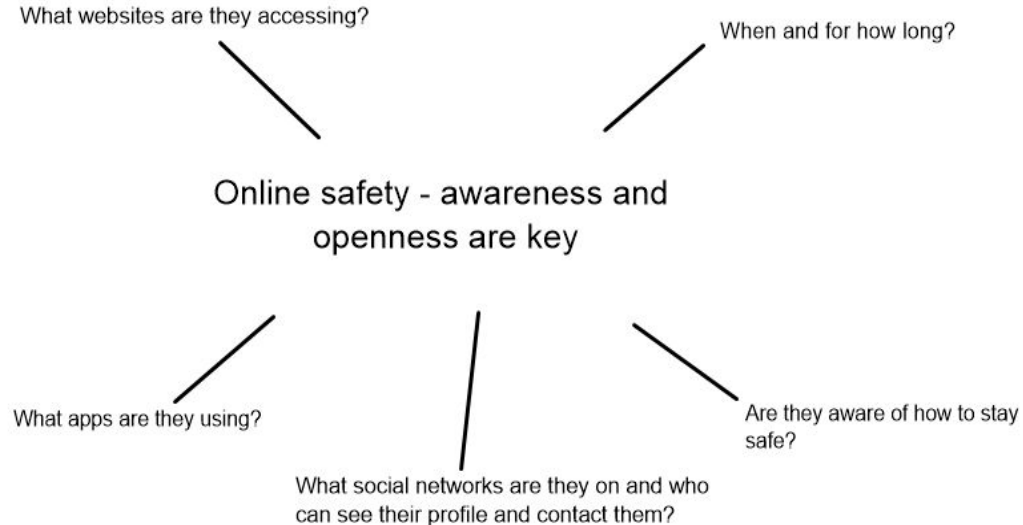




Online Safety

Useful links:

- NSPCC
<https://www.nspcc.org.uk/keeping-children-safe/online-safety>
- Think You Know - videos
<https://www.thinkuknow.co.uk/>
- Childnet advice and support
<https://www.childnet.com/>
- Child Exploitation and Online Protection Reporting Service
<https://www.ceop.police.uk/Safety-Centre/>



Keeping in Touch



- Weekly newsletter
- Curriculum overviews and knowledge organisers
- Letters (via ping)
- Twitter - @MossHallJnr <https://twitter.com/MossHallJnr>
- Staff on the playground before and after school
- Please keep us up to date with any problems or changes
 - Your class teacher is the first point of contact for queries and concerns
 - Call or email the school office for any queries or to organise a meeting
 - The leadership team are always available for meetings as well

Key Dates



- Photos - Thursday 22nd September
- Languages Day - Wednesday 28th September
- KS2 Flu Sprays - Thursday 29th September
- Y6 online workshop Migration Museum - Friday 14th October
- Half Term - 24th - 28th October
- **Learning Review Day (closed to children) - Friday 18th November**
- Y6 trip to Mandir - Monday 5th December
- KS2 Sats - Mon 8th May - Fri 12th May 2023
- Y6 Residential Trip - Mon 10th July - Friday 14th July 2023

Trips

For this Autumn term, we have **3 trips** planned:

History - Immigration - **Migration Museum - virtual** at Moss Hall Junior School - 14th October

Geography - climate and biomes and Science - evolution - **Climate Change Workshop** - Wednesday 2nd November/Thursday 3rd November -

RE - Hinduism - **Hare Krishna Temple, Watford** - Monday 5th December

Questions?

Yr6 Residential Trip talk
in 6G at 4pm.

